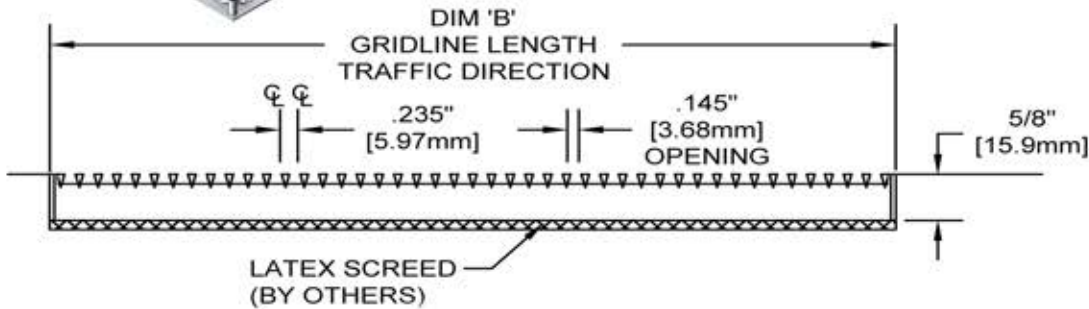


## Stainless steel Entrance Flooring



### Technical Data :

- Product Depth & weight: 13/16" (20.6mm) - 5.65kgs/pc
- Product size : 18" (457.2mm) x 18" (457.2mm)
- 0.235" (5.97mm) Wire spacing .
- Type 304 Stainless steel
- Hidden mounted lockdowns
- 100lbs./per wheel rolling load capacity



## Stainless steel Entrance Flooring Specifications

### MODEL: CS1101

#### 1. Manufactures

A. Drawings and specifications are based on manufacture's literature from Zhejiang CES pipe Industrial CO., Ltd unless otherwise indicated.

#### 2. Materials

A. Stainless steel - Type 304 stainless steel for surface wires and support bars.

#### 3. Floor Grids

##### A. Model and Description

CS1101 Entrance Grids shall be manufactured from type 304 stainless Steel in 13/16" (20.6mm) depth. Wires to be 0.09" (2.28mm) x 1.5" (3.81mm) electronically welded and spaced 0.145" (3.68mm) apart.

B. Mud Plate: Permanently affixed to the sub floor with epoxy cement, the 1/8 (3.18mm) thick aluminium mud plate aligns and secures each Floorometry module.

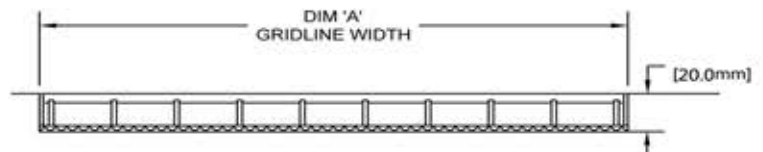
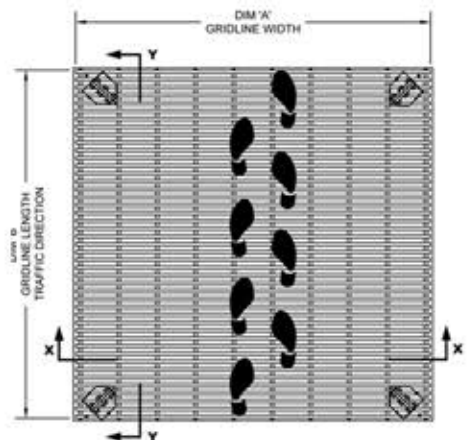
C. Unit must withstand 1000lb./wheel loads (load applied to a solid 5"x2" wide polyurethane wheel, 100passes without damage. )

#### 4. Grid Frames

A. CS1101 Entrance mats shall be manufactured with frame what made from type 304 Stainless Steel in 0.098" (2.5mm) width x 5/8" (15.9mm) depth.

#### 5. Lock Down Mechanism

A. Hidden Lock Down shall be a hidden device to secure the Grilles to the concrete surface. Made from Type 304.

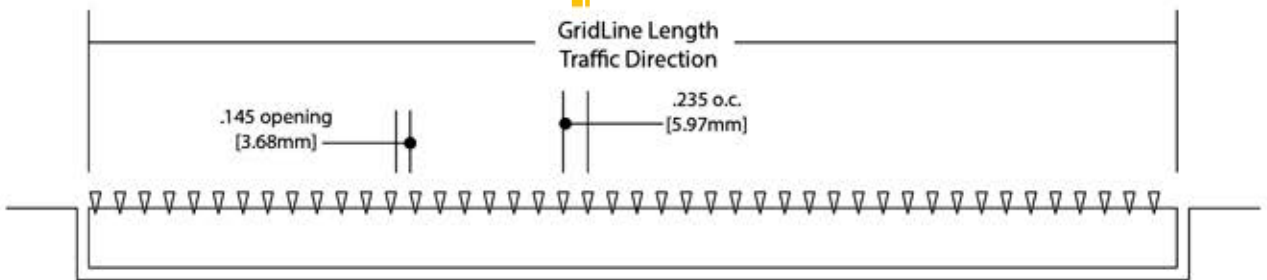


## Stainless steel Entrance Flooring



### Technical Data :

- Product Depth & weight: 9/8" 928.6MM)-5.4lbs./sqft.  
5/8"(15.9mm)-3.8lbs./sq.ft.
- 0.235" (5.97mm) Wire spacing.
- Type 304 Stainless steel
- Hidden mounted lockdowns
- 100lbs./per wheel rolling load capacity
- 5 year limited warranty



## Stainless steel Entrance Flooring Specifications

### MODEL: CS1102

#### 1. Manufactures

A. Drawings and specifications are based on manufacture's literature from Zhejiang CES pipe Industrial CO., Ltd unless otherwise indicated.

#### 2. Materials

A. Stainless steel - Type 304 stainless steel for surface wires and support bars.

#### 3. Floor Grids

A. Model and Description

CS1101P Entrance Grids shall be manufactured from type 304 stainless Steel in 9/8" (28.6mm) OR 5/8" (15.9 mm) Wires to be 0.09" (2.28mm) x 0.15" (3.81mm) electronically welded and spaced 0.145" (3.68mm) apart.

B. Unit must withstand 1000lb./wheel loads (load applied to a solid 5"x2" wide polyurethane wheel, 100passes without damage.

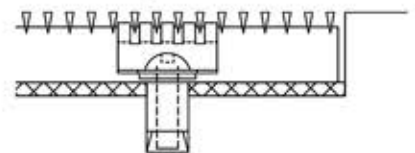
#### 4. Grid Frames

A. CS1101P Entrance mats shall be manufactured w/ or w/o frame , if shall be made from type 304 Stainless Steel in 0.098(2.5mm) width x 9/8" (28.6mm) or 5/8" (15.9 mm) depth.

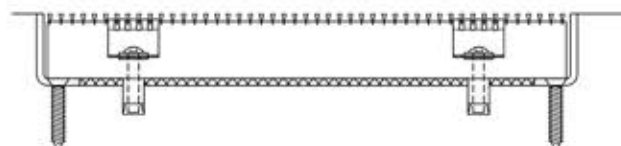
#### 5. Lock Down Mechanism

A. Hidden Lock Down shall be a hidden device to secure the Grilles to the concrete surface. Made from Type 304.

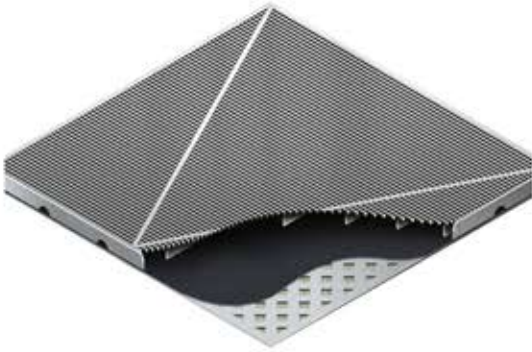
Below is an example of a Hidden Lock Down.



Level Base Frame with Optional Drain Pan

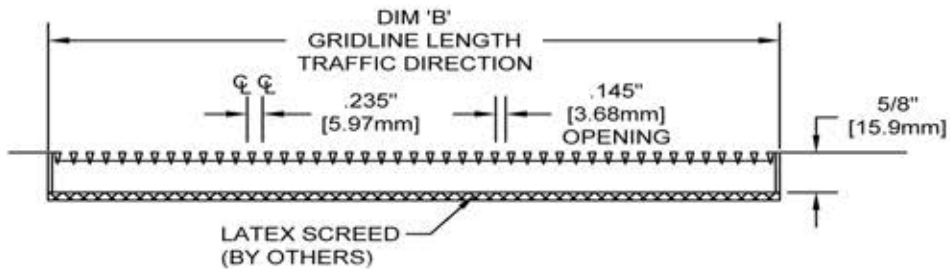


## Stainless steel Entrance Flooring



### Technical Data :

- Product Depth & weight: 13/16" (20.6mm)-5.65kgs/pc
- Product size : 18" (457.2mm )x 18" (457.2mm)
- 0.235" (5.97mm) Wire spacing .
- Type 304 Stainless steel
- Hidden mounted lockdowns
- 100lbs/per wheel rolling load capacity
- 5 year limited warranty



## Stainless steel Entrance Flooring Specifications MODEL: CS1102

### 1. Manufactures

A. Drawings and specifications are based on manufacture's literature from Zhejiang CES pipe Industrial CO., Ltd unless otherwise indicated.

### 2. Materials

A. Stainless steel - Type 304 stainless steel for surface wires and support bars.

### 3. Floor Grids

A. Model and Description

CS1102 Entrance Grids shall be manufactured from type 304 stainless Steel in 13/16" (20.6mm) depth. Wires to be 0.09" (2.28mm) x 1.5" (3.81mm) electronically welded and spaced 0.145" (3.68mm) apart.

B. Mud Plate: Permanently affixed to the sub floor with epoxy cement, the 1/8 (3.18mm) thick aluminium mud plate aligns and secures each Floorometry module.

C. Unit must withstand 1000lb./wheel loads (load applied to a solid 5"x2" without damage )

### 4. Grid Frames

A. CS1102 Entrance mats shall be manufactured with frame what made from type 304 Stainless Steel in 0.098(2.5mm) width x 5/8" (15.9mm) depth.

### 5. Lock Down Mechanism

A. Hidden Lock Down shall be a hidden device to secure the Grilles to the concrete surface. Made from Type 304.

