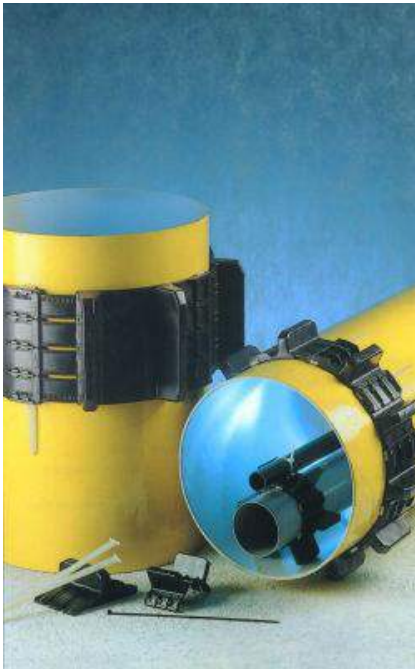


Insulator Skids



Description

Skids center utility pipes in casing pipe through which it must pass and are used in river crossings, canal crossings and bridge crossings as well as highway and railroad crossings. These are designed to ease of installation, are virtually corrosion proof and provide insulating protection from a possible electrical shorting between the carrier pipe and casing. Their patented construction means speedier assembly times – no more tooling around with screwdrivers or supplementary clamping implements. Different segments are linked and tightened by means of plastic pins. The flush fit of their corresponding shapes guarantees extreme endurance. Skids eliminate the need to fill the casing annulus with sand which is extremely labor intensive. Sand in the annulus also acts as an electrolyte thereby introducing unwanted current to the steel or ductile iron. Eliminating the annular fill allows for easy removal to repair or replace damaged pipes.